



# SERVICES and RESOURCES



PREVENT



MITIGATE



PROTECT



RESPOND



RECOVER

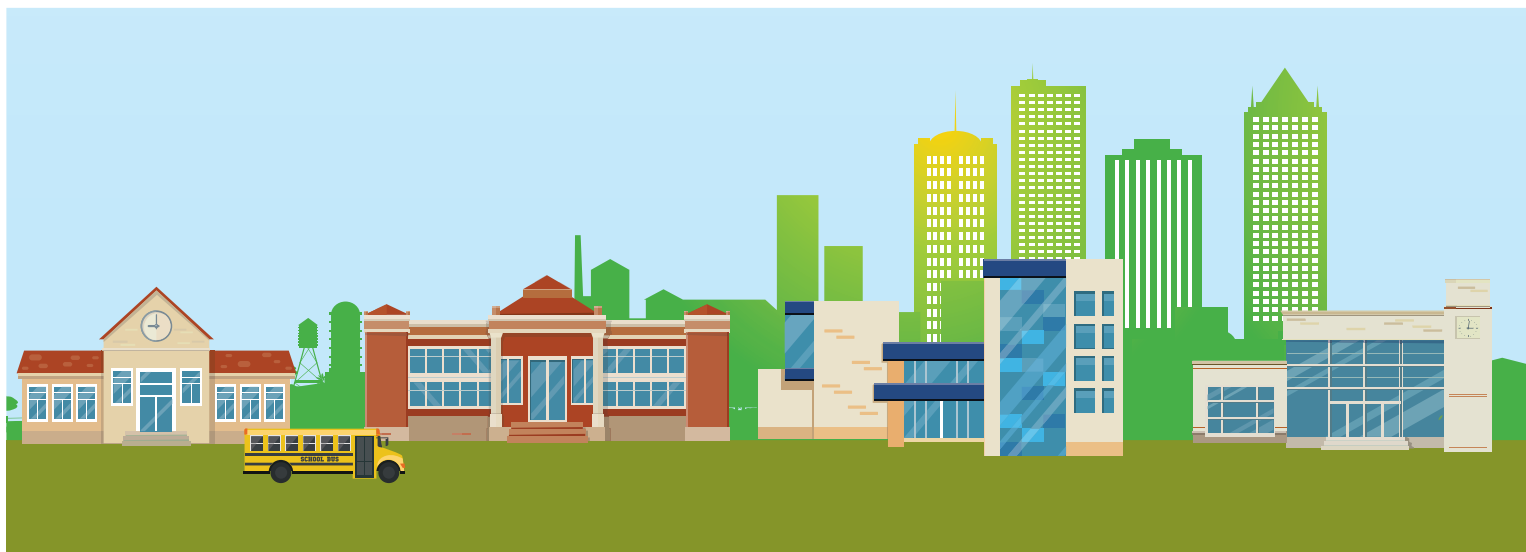
 (855) 781-REMS (7367)

 @remstacenter

 [info@remstacenter.org](mailto:info@remstacenter.org)

 <https://rem.ed.gov>

# Your National School Safety Center



Our nation's K–12 schools and school districts are entrusted to provide a safe and healthy learning environment for students, faculty, and staff members. Faced with emergencies ranging from active shooter situations to fires, tornadoes, floods, hurricanes, earthquakes, and pandemic influenza, this is no easy task. Many of these emergencies occur with little to no warning. It is critical for all schools and school districts—public and private, large and small, rural and urban—to plan ahead to ensure the safety and general welfare of all members of their school community.

# What is the REMS TA Center?

The U.S. Department of Education's Office of Safe and Healthy Students has administered the REMS TA Center to serve two critical functions to support a safe and supportive learning environment for children, faculty, staff, and others. We build the preparedness capacity (including prevention, protection, mitigation, response, and recovery efforts) of schools, school districts, and institutions of higher education (IHEs), and their community partners at the local, state, and Federal levels. We also serve as the primary source of information dissemination for schools, school districts, and IHEs for emergencies via the REMS TA Center Website.







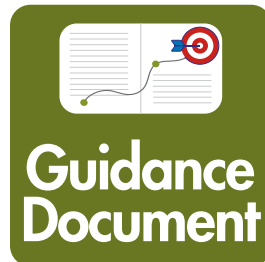
# Who do we serve?

- Schools and School Districts (e.g., K–12 public, non-public, and private)
- IHEs (e.g., community colleges, universities, and technical schools)
- Local Education Agencies (LEAs)
- Regional Education Agencies (REAs)
- State Education Agencies (SEAs)
- Community partners (e.g., law enforcement, fire department, public safety, emergency medical services, health and mental/behavioral health agencies)
- Current or former grantees (e.g., grants to states for school emergency management, emergency preparedness, response and crisis management, REMS, and emergency management for higher education)
- Other stakeholders in K–12 or IHE Emergency Management (e.g., families and nonprofit organizations)

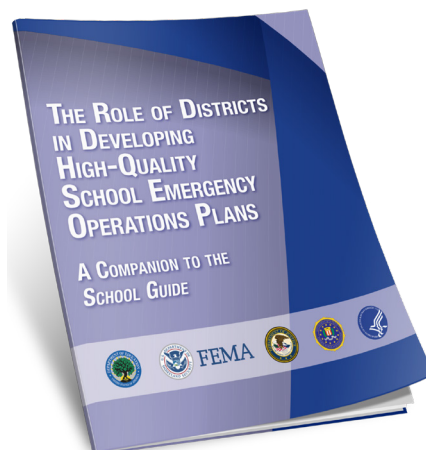
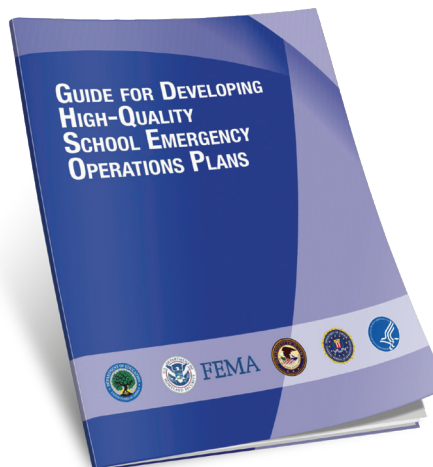


# What services and tools do we offer?

## Publications and Guidance Documents



Federal agencies have worked together to create joint products on critical topics in emergency management for K–12 schools and school districts and IHEs. These guidance documents align and build upon years of emergency planning work by the Federal government and may be used to develop, review, and revise high-quality emergency operations plans (EOPs); understand adult sexual misconduct in the school setting and develop related policies and procedures; prevent targeted violence at schools and IHEs; and identify, assess, and manage students who may or may not pose a risk to themselves or others. View our publications here: <https://rems.ed.gov/RemsPublications.aspx>



## Virtual Trainings

We offer an archived diverse set of trainings, including Webinars and self-paced online courses, to practitioners in the field of school emergency management. Topics include emergency evacuation planning for the whole school community, reunification after a community-wide disaster, food safety in emergencies, and more. View our virtual trainings at [https://rem.ed.gov/TA\\_VirtualTrainings.aspx](https://rem.ed.gov/TA_VirtualTrainings.aspx).



## Tool Box

We maintain an interactive and virtual library of tools developed by emergency managers in the field. This library or “tool box” contains relevant resources pertinent to the needs of SEAs, REAs, LEAs, IHEs, and their community partners as they engage in the process of emergency preparedness planning. Submit your tool at <https://rem.ed.gov/ResourceSubmission/ResourceSubmissions.aspx>.



## Community of Practice

Our virtual space is open to schools, school districts, IHEs, and their community partners to collaborate on special projects, share news and resources, discuss trends and ideas, and learn from the experiences of others in the field. Join the Community of Practice at <https://rem.ed.gov/COP/Default.aspx>.



## Technical Assistance

REMS TA Center staff members are available by email ([info@remstacenter.org](mailto:info@remstacenter.org)) and via toll-free telephone (855-781-REMS [7367]) to respond to requests for assistance on a variety of topics pertaining to emergency operations planning for schools and school districts. You can also submit your TA request using our interactive TA Request Form: <https://rem.ed.gov/RequestTA.aspx>.





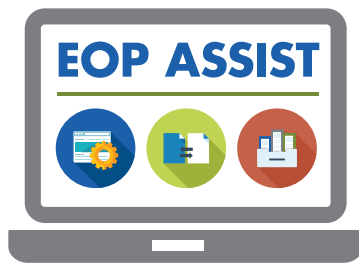
## Emergency Management Virtual Toolkit



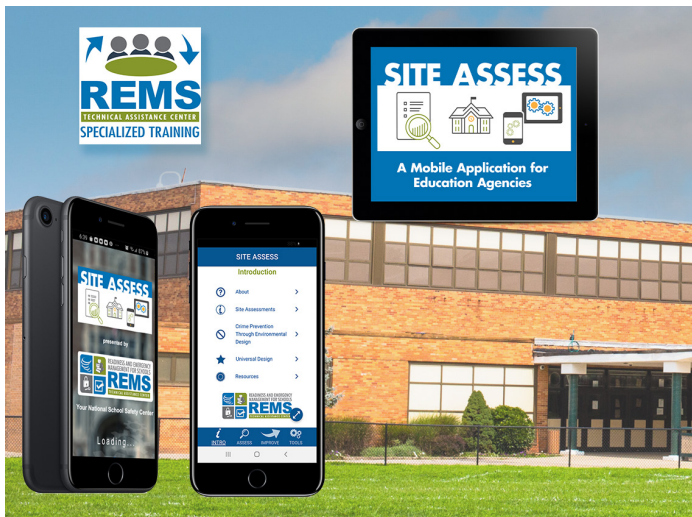
Our data-synchronized toolkit is designed to help LEAs, REAs, and SEAs, emergency management agencies, school safety centers, and others who play a key role in school safety and emergency management share the latest Federal school emergency management training and TA resources and information with schools in their state or school district. Register to download and install the toolkit here: <https://rem.ed.gov/EMVirtualToolkitRegistration.aspx>.

## OP Interactive Tools

We offer four EOP interactive tools to support individuals and planning teams in applying concepts fundamental to emergency management. Schools can use these tools to create new plans as well as to revise or update existing plans and align their emergency planning practices with those at the national, state, and local levels. Learn more about our tools at <https://rem.ed.gov/EOPinteractivetools.aspx>.



SITE ASSESS, our latest tool, is a secure mobile app that allows school and school district personnel to walk around a school building and grounds and examine their safety, security, accessibility, and emergency preparedness. Visit the Google Play and Apple App stores to download SITE ASSESS. It's compatible with iOS and Android operating systems.



- Upload images directly into the app.
- Export data into Word or Excel for aggregation/analysis.
- Incorporate Crime Prevention Through Environmental Design and universal design/accessibility.



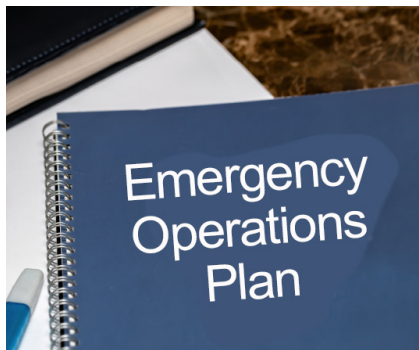


## On-site Trainings by Request (TBRs)

We offer a variety of train-the-educator (TtE) and train-the-trainer (TtT) TBRs on topics ranging from developing EOPs to behavioral threat assessments in schools.

For each training, we provide **FREE** electronic workbooks and supplemental materials, expert trainer(s), and TA Center staff support.

## What on-site trainings does the REMS TA Center offer?



### Developing EOPs K–12 101 TtE

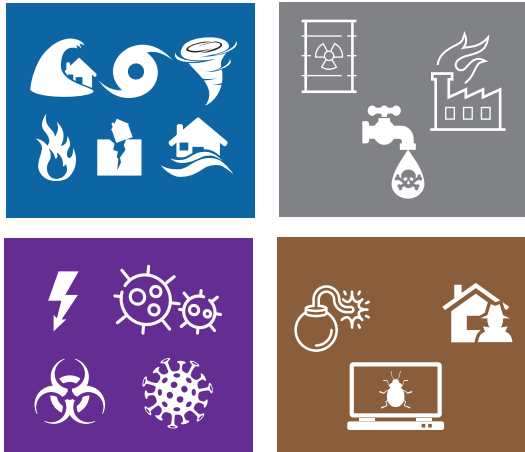
A 4-hour overview of recommended planning processes and key considerations for creating, revising, or enhancing school EOPs. Potential educators include school staff members who serve on an EOP planning team, and other interested community stakeholders, such as local emergency management agencies, public or mental/behavioral health practitioners, and first responders.

### Developing EOPs K–12 101 TtT

An 8-hour overview of recommended planning processes and key considerations for creating, revising, or enhancing school EOPs. Potential master trainers from participating schools and school districts responsible for training site-based planning teams would benefit from this training. It is also applicable for school staff members who serve on an EOP planning team and other interested community stakeholders, such as local emergency management agencies, public or mental/behavioral health practitioners, and first responders.

### Earthquake Preparedness for Schools

An 8-hour training that provides an overview of how schools and school districts can better prepare for an earthquake. Individuals with roles and responsibilities in protecting the school community, before, during, and after potential earthquakes would benefit from this training. This includes, but is not limited to, schools and school district administrators, educators, counselors, school psychologists, facilities staff, food management and cafeteria staff, school nurses, support staff, and community partners.



### Resilience Strategies for Educators: Techniques for Self-Care and Peer Support TtE

A 7-hour learning opportunity for caregivers in schools and school districts to understand and teach others resilience strategies following emergency events. This TtE training is intended for school counselors, social workers, and psychologists, as well as community partners such as mental/behavioral health practitioners.



### Resilience Strategies for Educators: Techniques for Self-Care and Peer Support TtT

An 8-hour learning opportunity for caregivers in schools and school districts to understand and teach others resilience strategies following emergency events. This training is intended for master trainers responsible for training site-based staff.

## School Behavioral Threat Assessments: An Introduction

An 8-hour training on how schools and school districts can prevent and reduce targeted violence in schools through behavioral threat assessments. This training is designed for school and school district administrators; teachers; counselors; school psychologists; support staff; any staff who play a role in threat assessment and/or school safety, security, emergency management, and preparedness; and community partners.



Please note that to provide the latest information to the field and ensure that our trainings integrate research studies, Federal recommendations, and lessons learned in the field, we develop new topics on an ongoing basis and periodically suspend delivery of particular training topics to revise the curricula. Please visit our Website for the most up-to-date list of offerings.

**You have reviewed the descriptions and criteria requirements, and have submitted your application. What happens next?**

- A notice of approval with the date and time confirmed;
- Trainers to present the workshop at your site;
- Access to training materials (workbooks) for each participant and supplemental materials, such as sign-in sheets, networking lists, and certificates of participation; and
- Online registration for your event and an electronic marketing flyer for local distribution, with the link to the online event registration form.

To learn more about our trainings, or to apply for a TBR online, please visit [https://rem.ed.gov/TA\\_TrainingsByRequest.aspx](https://rem.ed.gov/TA_TrainingsByRequest.aspx) or email us at [info@remstacenter.org](mailto:info@remstacenter.org)!

Call or email the REMS TA Center Help Desk to learn more about the services we offer.



 (855) 781-REMS (7367)

 [info@remstacenter.org](mailto:info@remstacenter.org)

 [@remstacenter](https://twitter.com/remstacenter)

 <https://rem.ed.gov>